



MATTE DOESN'T
HAVE TO BE BORING

SATIN

High performance matte surface protection

WWW.NANOTEKPPF.COM

SATIN

High performance matte surface protection

Nanotek® Satin offers a unique satin finish produced to replicate the factory matte paint available from a variety of vehicle manufacturers. These hard to maintain surfaces become fully protected with the application of Nanotek® Satin. This distinctive finish can also provide a splash of individualism to a previously glossy surface. The film is UV stable, with resistance to discolouration and cracking.

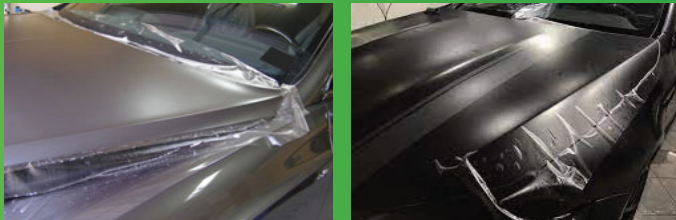
Nanotek® Satin is perfect for use on smooth surfaces such as car paint and is easily formed on convex and concave curves. Due to its superior properties this film is covered by a lifetime warranty.

- Self-healing technology
- Super matte finish
- Ultra-smooth and high gloss top layer
- Elasticity up to 280%
- 5 Years warranty

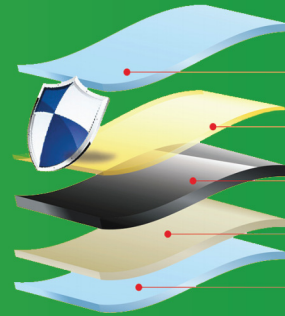
CHARACTERISTICS

There is little doubt that Matte look paint adds a style statement to your car. But your new vehicle came with glossy paint?

Nanotek® Satin not only adds 175 microns of self-healing paint protection, it gives your car a satin finish. Make a style statement with Nanotek® Satin PPF.



HEALING
SHEEN
PROTECTION



Protective Cap Sheet

To protect film during transportation

Self Healing top coat

This layer provides superior shine and protection

Aliphatic Urethane film

Durable, soft and high impact resilient layer

Acrylic Adhesive

Crystal clear adhesive system

Strong Polyethylene liner

Helps to allow computer cutting on plotter

Technical Information

Type:	Polyurethane
Colour and surface:	Satin Matte
Thickness:	175 microns (6.9 mil)
Elongation – percent (ASTM D882):	280%
Peel (PSTC-101) 3D/RT/SS:	280Nm/25mm
Shear (PSTC-101) 1hr Dwell/SS:	Avg 257 mins/4:28 hr
Gravelometer (SAEJ4000):	Pass (no ruptures)
Outdoor Weathering – 24 months: Arizona 45° South Exposure (Range 35°–105°F)	Pass (no changes)
Chemical resistance: Isopropanol/water 1:1 Carburettor cleaner (brushing test)	Pass (no effect)

